

# Renol

## Patient Safety and Comfort

RENOL is a company specialised in patient positioning and restraining products. With 40 years of experience, it offers a complete range of professional, durable, soft and competitive products that perfectly meet the needs of patients of all ages in terms of daily safety and comfort. The main objective is to ensure patient safety and the serenity of healthcare staff.



# Innovative approach

## Risk assessment

We propose an innovative and "progressive" approach to ensuring patient safety. Based on an objective assessment by healthcare staff of the risks of falls and serious injuries, we offer tailored solutions to protect the patient.

## Alternative solutions

We have developed ergonomic and multi-functional positioning products, focusing on patient safety and comfort.

## Questioning restraint

A commitment to systematically re-evaluating the need for strong restraint methods, promoting a patient-centred approach.

## Ethics and patient dignity

Our company emphasises respect for patient ethics and dignity, seeking alternative solutions for patient safety.

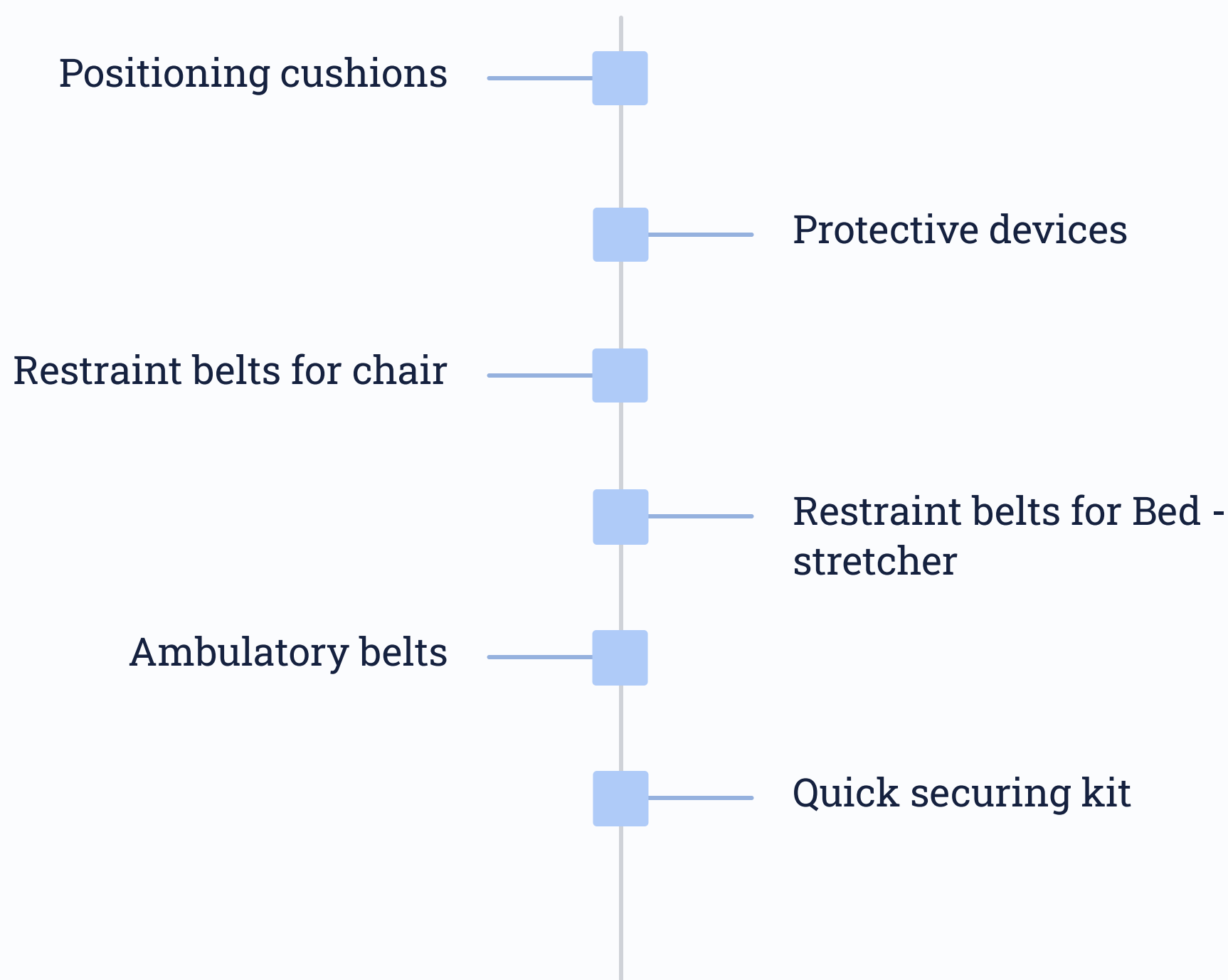
*Renol*



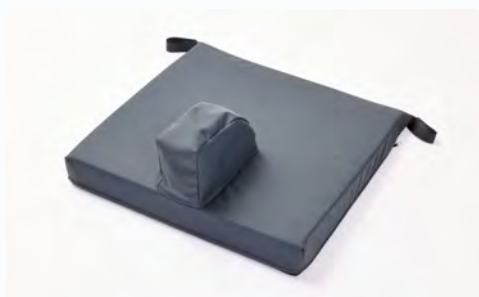
## Product range

We have perfected a wide range of positioning and restraining products to stabilise and secure the patient in their chair or bed in order to anticipate any accidents. The products include cushions, various protective devices and appropriate restraint belts, adapted for a comfortable and optimal position.

Our complete range of immobilisation allows the patient to be secured in the chair, bed and stretcher.



## Chair positioning



### Inclined cushion with abduction

The inclined cushion with abduction limits sliding forward and relieves pressure points.

- *Ref: RCV07300*

-Size: 6Hx42Lx42w cm

- *Ref: RCV07400*

-Size: 10Hx42Lx42w cm



### Premium Cushion

Combination of three cushions (available separately). Our combined formula offers maximum adjustable comfort for any seat or wheelchair.

- *Ref: RFC56000*



### Moon cushion

The Moon cushion provides optimal arm support and ensures a stable position thanks to its strap.

Combine the Moon cushion with the inclined cushion with abduction for gentle support.

- *Ref: RCM35209*



### Retraint shoes

The stop slippers prevent slipping and keep the feet on the footrests.

- *Ref: RCS10045*

## Bed positioning



### Positioning cushion

The positioning cushion adapts perfectly to the contours of the body and offers several possible uses.

- *Ref: RCM11100*

-Size: 180L cm

Cotton cover with zip available.

- *Ref: RCM11188*



### Long positioning cushion

The long positioning cushion adapts perfectly to the contours of the body and offers several possible uses.

- *Ref: RCM12200*

-Size: 280L cm

Cotton cover with zip available.

- *Ref: RCM12288*



### Comfort cushion

The comfort cushion positioned under the thighs allows good positioning and offers several possible uses.

- *Ref: RCM14000*

-Size: 38x50 cm

Cotton cover with zip available.

- *Ref: RCM14088*



### Protective barrier

The protective barriers are fixed to the bed rails to protect against impacts.

- *Ref: RCP10153*

-Size: 40Hx153L cm

- *Ref: RCP10195*

-Size: 40Hx190L cm



## Protective Devices

### Protective Gloves



#### Soft Glove

Made of cotton, this glove provides soft and flexible protection for the hand, while ensuring comfort and safety for the patient.

- *Ref: RCP01100*



#### Rigid Glove "Net"

Made of cotton, the surface of this glove, on the palm side, remains rigid. The outer side is covered with a mesh, allowing the skin to breathe. The patient cannot grasp any object, nor open any belt. They are unable to remove tubes or dressings. This glove is particularly indicated for agitated patients or those prone to self-harm.

- *Ref: RCP01235*



#### Rigid Glove

Made of cotton, the surface of this glove, on the palm side, remains rigid. The outer side is covered with a soft, ventilated cotton. The patient cannot grasp any object, nor open any belt. They are unable to remove tubes or dressings. This glove is particularly indicated for agitated patients or those prone to self-harm.

- *Ref: RCP01238*

## Indications for the use of restraint

Discover how RENOL revolutionises traditional restraint by adopting innovative strategies after a thorough risk assessment.

- 1 Medical device**

RENOL products are medical devices designed to ensure patient safety in various situations, particularly when they are immobilised in bed, on a stretcher or in a wheelchair. These products are mainly used in healthcare settings such as hospitals, clinics, nursing homes and other medical facilities.
- 2 Mandatory prescription**

RENOL restraint products are only used on medical prescription.
- 3 Trained personnel**

Use of RENOL products by personnel trained according to RENOL safety instructions and in compliance with the safety rules of the facility.
- 4 Reading the instructions for use**

It is essential to read the instructions for use carefully and understand them before using the products (belts, straps, locks). It is also highly recommended to watch the videos on how to position RENOL products.
- 5 Product verification**

Check the products before each use, the product must be clean and in good condition.
- 6 Patient monitoring**

Frequently monitor the immobilised patient, agitated and uncontrollable patients must be monitored constantly.
- 7 Risk reassessment**

Regularly re-evaluate the risks of falls and serious injuries in an objective manner.



## Restraint belts with buckle closure for chair



### Abdominal belt

The abdominal belt prevents the patient from getting up from the chair. Combine the belt with the inclined cushion with abduction to prevent the patient from sliding.

- *Ref: RFC26100*

-One size



### Abdominal and pelvic belt

The abdominal and pelvic belt prevents the patient from getting up, sliding forward and falling out of the chair.

- *Ref: RFC26200*

-One size



### Abdominal and shoulder belt

The abdominal and shoulder belt prevents the patient from getting up and tilting forward. Combine the belt with the inclined cushion with abduction to prevent the patient from sliding.

- *Ref: RFC26300*

- One size



### Abdominal, pelvic and shoulder belt

The abdominal, pelvic and shoulder belt prevents the patient from getting up, tilting, sliding forward and falling out of the chair.

- *Ref: RFC26400*

-One size





# Renol

## Restraint belt system with locking closure for chair



### Abdominal and pelvic belt

For patients at high risk of falling. The belt prevents the patient from getting up, sliding forward and falling out of the chair. This belt can be equipped with a magnetic (M) or mechanical (RL) locking kit.

- *Ref: RFC29200 (M)*
- *One size*
- *Lock: 2 locks(M)*
- +1 key(M)



### Abdominal, pelvic and shoulder belt

For patients at high risk of falling. The abdominal, pelvic and shoulder belt offers optimal safety, prevents the patient from getting up, tipping over, sliding forward and falling out of the chair. This belt can be equipped with a magnetic (M) or mechanical (RL) locking kit.

- *Ref: RFC29400 (M)*
- *One size*
- *Lock: 2 locks(M)*
- +1 key(M)



### Abdominal belt

For patients at high risk of falling, the abdominal belt, placed around the waist, prevents the patient from getting up. This belt can be equipped with a magnetic (M) or mechanical (RL) locking kit.

Combine the belt with the inclined cushion with abduction or add the RFP22000 pelvic belt to prevent the patient from sliding.

- *Ref: RFC47115 (M)+ option RFP22000 (pelvic)*
- *Size: Small/Medium, 60 to 110 cm*
- *Lock: 2 locks(M)*
- +1 key(M)
- *Ref: RFC47140 (M)+ option RFP22000 (pelvic)*
- *Size: Large, 85 to 135 cm*
- *Lock: 2 locks(M)*
- +1 key(M)



### Abdominal and pelvic belt

For patients at high risk of falling, the abdominal belt with an integrated pelvic belt, placed around the waist, prevents the patient from getting up and sliding forward. This belt can be equipped with a magnetic (M) or mechanical (RL) locking kit.

- *Ref: RFC57115 (M)*
- *Size: Small/Medium, 60 to 110 cm*
- *Lock: 2 locks(M)*
- +1 key(M)
- *Ref: RFC57140(M)*
- *Size: Large, 85 to 135 cm*
- *Lock: 2 locks(M)*
- +1 key(M)



## Restraint belt system with locking closure for bed



### Abdominal belt + pelvic belt system

The "ROLL BELT" abdominal belts with reinforcement straps and integrated pelvic belt are designed to secure the patient to the bed.

These belts are available in several models and sizes, with a choice between two widths: 14 cm or 18 cm, in order to adapt to the specific needs of each patient. This belt is equipped with a magnetic (M) or mechanical (RL) locking kit.

- *Ref: RFB09115P (M)*

*-Size: Small/Medium, 60 to 110 cm /width 14 cm*

*-Locks: 3 locks(M) +1 key(M)*

- *Ref: RFB09140P (M)*

*-Size: Large, 85 to 135 cm /width 14 cm*

*-Locks: 3 locks(M) +1 key(M)*



### Shoulder belt

The shoulder belt is designed to prevent the patient from sliding upwards or lifting the torso. This belt is equipped with a magnetic (M) or mechanical (RL) locking kit.

- *Ref: RFY21610 (M)*

*-One size*

*-Locks: 5 locks(M) +1 key(M)*



### Wrist belt for abdominal belt

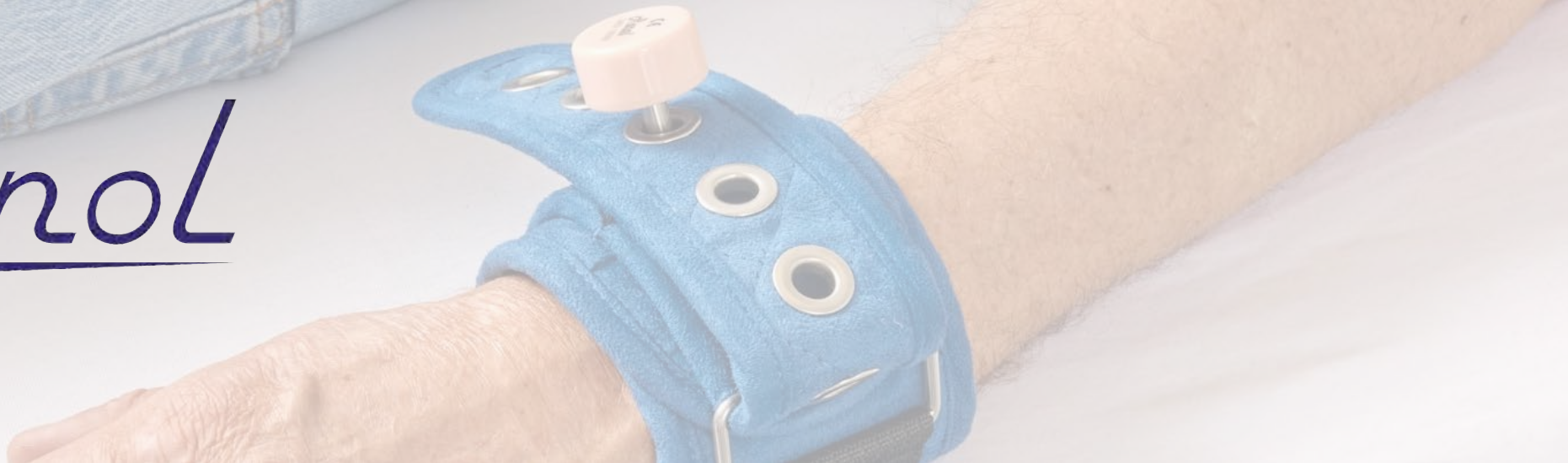
The wrist restraint, combined with the "ROLL BELT", allows the patient's wrists to be securely held. It offers two levels of security: a velcro closure system and a locking system. This belt is equipped with a magnetic (M) or mechanical (RL) locking kit.

- *Ref : RFW16100 (M)*

*-Size: Medium, 14 to 22 cm*

*-Locks: 2 locks(M)*





## Wrist and ankle restraints with locking closure



### Wrist restraint

The restraint allows the patient's wrists to be securely held. It offers two levels of security: a Velcro closure system and a locking system. This restraint can be equipped with a magnetic (M) or mechanical (RL) locking kit.

- Ref: RFW16210 (M)

-Size: Small 10 to 18 cm

-Locks: 4 locks(M) +1 key(M)

- Ref: RFW16200 (M)

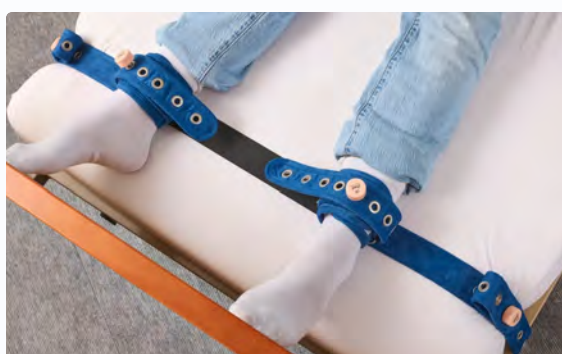
-Size: Medium 14 to 22 cm

-Locks: 4 locks(M) +1 key(M)

- Ref: RFW16220 (M)

-Size: Large 18 to 26 cm

-Locks: 4 locks(M) +1 key(M)



### Ankle restraint

The restraint allows the patient's ankles to be securely held. It offers two levels of security: a Velcro closure system and a locking system. This restraint can be equipped with a magnetic (M) or mechanical (RL) locking kit.

- Ref: RFA17210 (M)

-Size: Small 16 to 24 cm

-Locks: 4 locks(M) +1 key(M)

- Ref: RFA17200 (M)

-Size: Medium 18 to 28 cm

-Locks: 4 locks(M) +1 key(M)

- Ref: RFA17220 (M)

-Size: Large 23 to 32 cm

-Locks: 4 locks(M) +1 key(M)



### Wrist and ankle restraint

The restraint has the advantage of being suitable for both wrists and ankles. It offers two levels of security: a velcro closure system and a locking system. This restraint can be equipped with a magnetic (M) or mechanical (RL) locking kit.

- Ref: RFL 15000 (M)

-Size: 14 to 28 cm

-Locks: 4 locks(M) +1 key(M)





## Wrist and Ankle bands



### Eco Wrist band

The "Eco" band is used to restrain the patient's wrists. It has a velcro closure system.

- *Ref: RFL15900*

-One size



### Eco Comfort Wrist band

The "Eco Comfort" band is used to restrain the patient's wrists. It has a velcro and buckle closure system.

- *Ref: RFL15700*

-One size



### Premium Wrist and Ankle band

The "Premium" band can be used for both the wrists and ankles. It offers two levels of security with a velcro system and a double stainless steel buckle fastening, ensuring optimal protection.

- *Ref: RFL15087*

-One size



### Premium Wrist and Ankle band

- *Ref: RFL15087*

-One size



## Locking systems

RENOL offers magnetic and mechanical locking systems to secure restraint devices. The magnetic system (M) includes a key (RFK01111) and a pin with a locking button (RFK01222). The mechanical system (RL), made of stainless steel, consists of a key (RFK00100) and a pin with a locking button (RFK00433). All our belts are available with or without locks. Just add the letter (M) for magnetic locking or (RL) for mechanical locking to the belt references.



### Magnetic locking (M)

Button and pin

- *Ref: RFK01222*



### Magnetic button (M)

Button

- *Ref: RFK01202*



### Magnetic pin (M)

Stainless steel pin

- *Ref: RFK01201*



### Magnetic key (M)

Key

- *Ref: RFK01111*



### Mechanical locking (RL)

Stainless steel button and pin

- *Ref: RFK00433*



### Mechanical button (RL)

Stainless steel button

- *Ref: RFK00400*



### Mechanical pin (RL)

Stainless steel pin

- *Ref: RFK00300*



### Mechanical key (RL)

Key

- *Ref: RFK00100*

## Quick security kit



### Security kit

The RENOL "CRISIS BAG" is specially designed to manage situations with agitated patients. It offers healthcare staff a complete, always available solution to quickly and effectively secure a patient in case of need.

*Ref: RFBAG115M - "CRISIS BAG"*

*Contains the Ref:*

- *RFB09115 (abdominal belt)*
- *RFP22000 (pelvic belt)*
- *RFB10200 (abdominal belt extension)*
- *RFY21610 (shoulder belt)*
- *RFW16200 (wrist belt)*
- *RFA17200 (ankle belt)*
- *RFK01222 (18 x magnetic lock)*
- *RFK01111 (4 x magnetic key)*

### Rapid intervention

It contains everything necessary for a rapid intervention: an abdominal belt with reinforcement straps, a pelvic belt, a shoulder belt, wrist and ankle belts, as well as the necessary magnetic locks.

### Everything at hand

This bag allows healthcare staff to have everything at hand in an instant.

*You can make your own crisis bag according to the needs of your facility.*



## RENOL Advantages

### Comfort and safety for the patient

RENOL restraint devices are designed to provide optimal comfort and maximum safety for patients. Made of terylene, a soft material against the skin, they ensure superior comfort while avoiding irritation from friction. Terylene remains supple and can be washed up to 95°C, ensuring impeccable durability and hygiene.

### A commitment to quality

All RENOL devices are manufactured with high-quality materials and are subject to rigorous controls to ensure their safety and reliability.

Our belts are made of multi-layer construction, giving them a tensile strength equivalent to 339kg. The thickness of the stainless steel of our rings guarantees a resistance that can withstand all crisis situations.

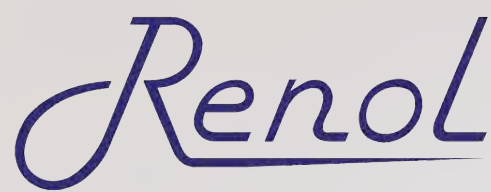
### Innovative solutions

RENOL offers a wide range of innovative solutions, designed to meet the specific needs of patients and caregivers, combining safety, comfort and efficiency.

### Advantages of RENOL restraint devices

- Ease of use
- Softness of belts
- Quality and resistance
- Hygiene and washing at 95°
- Durability of devices

# Contact RENOL for innovative patient safety solutions



1

## Explore the products

Discover the range of patient safety and comfort solutions.

2

## Consult experts

Talk to our distributor about your specific patient care needs.

3

## Implement solutions

Integrate RENOL devices into your healthcare facility to improve patient care.

4

## Contact us:

Distributor:

5

## RENOL S.A.

Rue Johannes Kepler 3, unit 3

1357 Hélécinne - Belgium

Tel.: +32 (0)19 332367

E-mail: [office@renolcare.com](mailto:office@renolcare.com)

[www.renolcare.com](http://www.renolcare.com)

